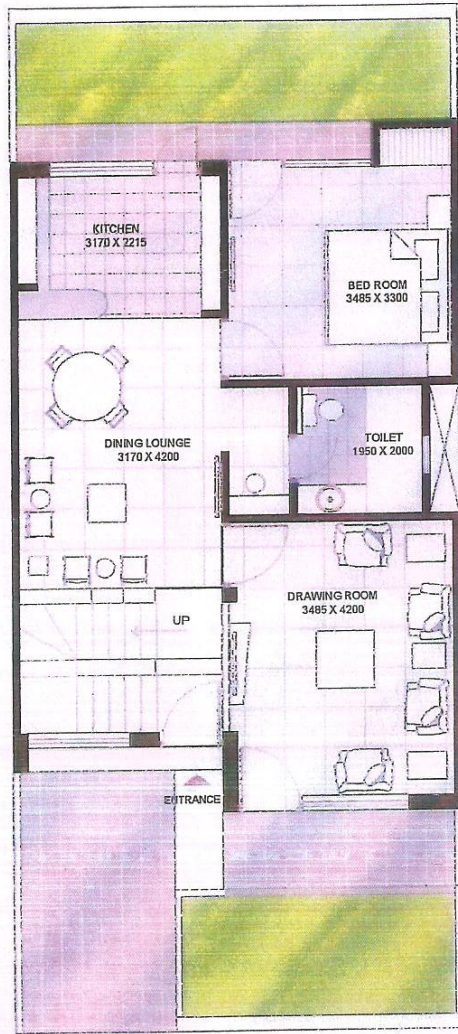


TOTAL PLOT AREA - 63294.0 SQM
 TOTAL GREEN - 15325.5 SQM
 NO. OF UNITS - 528
 NO. OF 2 BED FLATS TYPE-A - 192
 NO. OF 2 BED FLATS TYPE-B - 96
 NO. OF 2 BED+STUDY FLATS - 192
 NO. OF VILLAS - 48
 NO. OF OPEN CAR PARKING - 536
 (EACH 2.4 X 4.5 MT.)

	2 BED TYPE-A UNITS
	2 BED TYPE-B UNITS
	2 BED+STUDY UNITS
	VILLAS

ARCHITECTS:
 ATUL GUPTA
 H-131, SECTOR-63
 NOIDA, U.P.

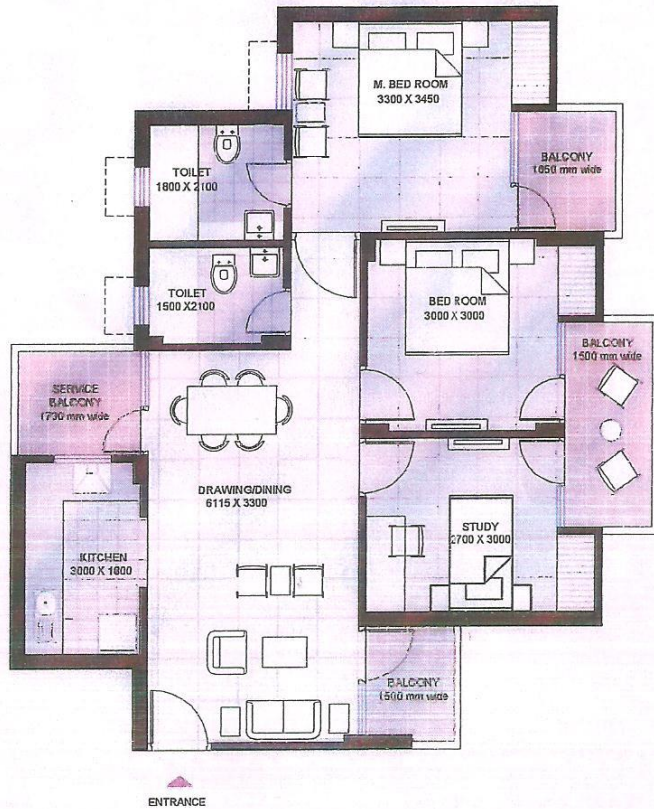


GROUND FLOOR
VILLA



FIRST FLOOR
VILLA

PLOT AREA = 112 SQ.M = 1205 SQ.FT.
 * GROUND COVERAGE = 67 SQ.M = 721 SQ.FT.
 * TOTAL BUILT UP AREA = 124.6 SQ.M = 1341 SQ.FT.
 * approximate area. The actual cost will be decided
 on the final built up area



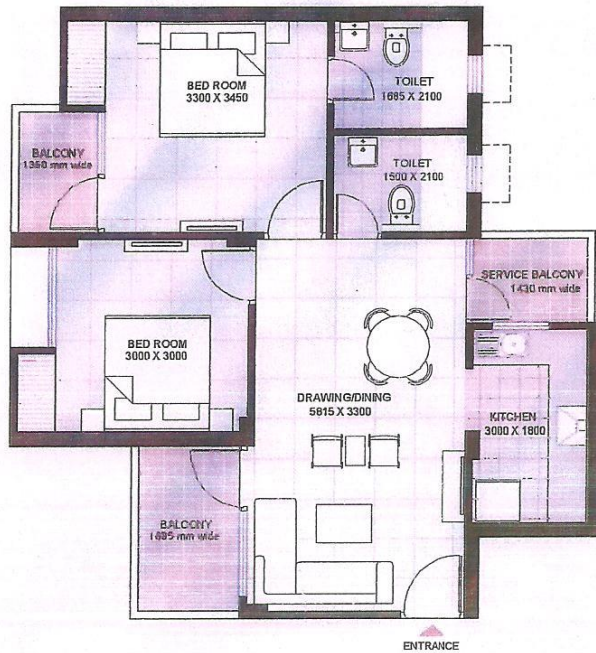
2 BED ROOM + STUDY

* TOTAL BUILT UP AREA = 91 SQ.M = 980 SQ.FT.

* SHARE OF AREA IN CORRIDOR, MUMTY, STAIRCASE = 8.4 SQ.M = 90 SQ.FT.

* TOTAL BUILT UP = 99.4 SQ.M = 1070 SQ.FT .

* approximate area. The actual cost will be decided on the final total built up area



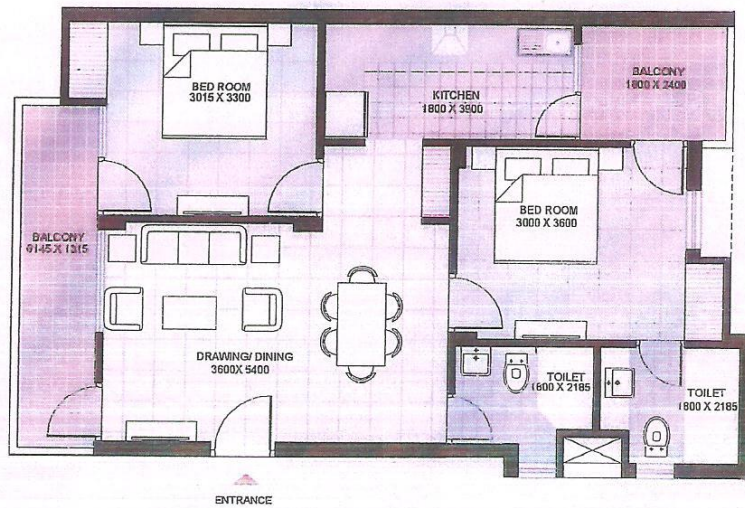
2 BED ROOM, TYPE - A

* TOTAL BUILT UP AREA = 74 SQ.M 796.3 SQ.FT.

* SHARE OF AREA IN CORRIDOR, MUMTY, STAIRCASE = 7.15 SQ.M = 77 SQ

* TOTAL BUILT UP = 81.15 SQ.M = 873.8 SQ.FT .

* approximate area. The actual cost will be decided on the final total built up area



2 BED ROOM , TYPE - B

- * TOTAL BUILT UP AREA = 79.6 SQ.M = 856.5 SQ.FT.
- * SHARE OF AREA IN CORRIDOR, MUMTY, STAIRCASE = 6.5 SQ.M = 70 SQ.FT.
- * TOTAL BUILT UP = 86.1 SQ.M = 926 SQ.FT .

** approximate area. The actual cost will be decided on the final total built up area*